

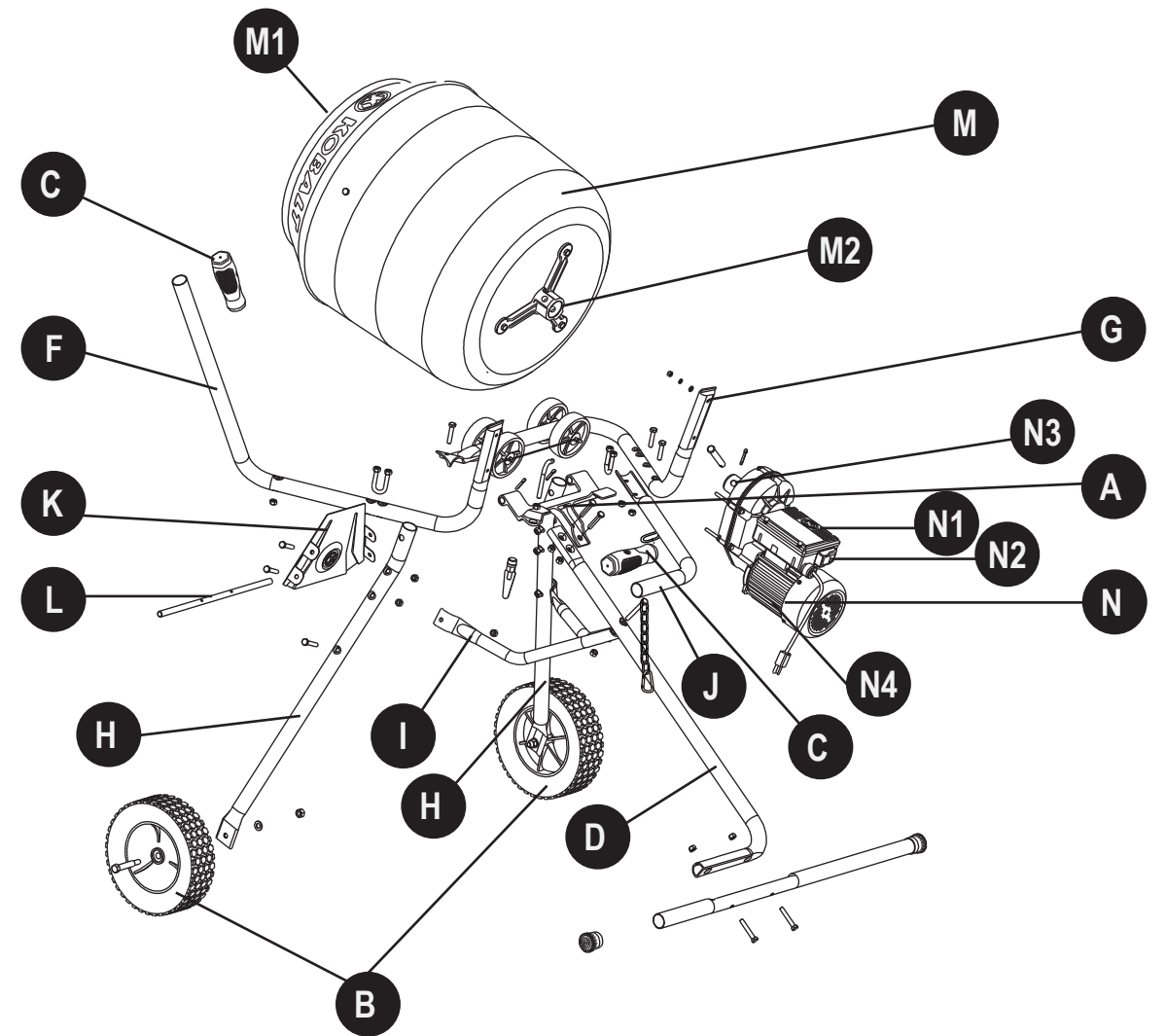
PART	DESCRIPTION	QUANTITY
A	Bottom Casting	1
B	Wheels	2
C	Handle Grips	2
D	Rear Leg	1
E	Rear Leg Cross Member	1
F	Handle	1
G	Drum Support Arm	1
H	Front Legs	2
I	Lower Support Frame	1
J	Dump Handle	1
K	Front Cover	1
L	Pivot Pin	1

PART	DESCRIPTION	QUANTITY
M	Drum Assembly	1
M1	Mixing Blades	3
M2	Drum Mounting Bracket	1
N	Motor Assembly	1
N1	Capacitor	1
N2	Motor Switch	1
N3	Gear Box Gasket	1
N4	Plastic Fan Blade	1
AA, BB, CC, DD	Hardware Kit	1
GG, JJ, EE	Hardware Kit	1
KK, HH, FF	Hardware Kit	1

Hardware:

Part	Description	Quantity	Picture
AA	M10 Nut	2	
BB	M10 Flat Washer	2	
CC	Shoulder Bolt	2	
DD	M8 × 40mm Bolt	5	
EE	M8 × 45mm Bolt	6	
FF	M8 × 60mm Bolt	3	
GG	Motor Shaft Pin	1	
HH	M8 Nut	18	
II	End Cap (Pre-installed)	2	

Part	Description	Quantity	Picture
JJ	Cotter Pin	3	
KK	M8 U-Bolt	2	
LL	Retaining Clip (Pre-installed)	1	
MM	Retaining Clip Handle (Pre-installed)	1	
NN	M8 Nut (Pre-installed)	4	
OO	M8 Flat Washer (Pre-installed)	4	
PP	M8 Spring Washer (Pre-installed)	4	



PART	DESCRIPTION	QUANTITY
A	Bottom Casting	1
B	Wheels	2
C	Handle Grip	1
D	Rear Leg	1
E	Rear Leg Cross Member	1
F	Handle	1
G	Drum Support Arm	1
H	Front Legs	2
I	Lower Support Frame	1
J	Dump Handle	1
K	Front Cover	1
L	Pivot Pin	1

PART	DESCRIPTION	QUANTITY
M	Drum Assembly	1
M1	Mixing Blades	3
M2	Drum Mounting Bracket	1
N	Motor Assembly	1
N1	Capacitor	1
N2	Motor Switch	1
N3	Gear Box Gasket	1
N4	Plastic Fan Blade	1
AA, BB, CC, DD	Hardware Kit	1
GG, JJ, EE	Hardware Kit	1
KK, HH, FF	Hardware Kit	1
OO, PP, QQ, RR	Hardware Kit	1

Hardware:

Part	Description	Quantity	Picture
AA	M10 Nut	2	
BB	M10 Flat Washer	2	
CC	Shoulder Bolt	2	
DD	M8 × 40mm Bolt	5	
EE	M8 × 45mm Bolt	7	
FF	M8 × 60mm Bolt	2	
GG	Motor Shaft Pin	1	
HH	M8 Nut	19	
II	End Cap (Pre-installed)	2	

Part	Description	Quantity	Picture
JJ	Cotter Pin	3	
KK	M8 U-Bolt	2	
LL	M8 Nut (Pre-installed)	4	
MM	M8 Flat Washer (Pre-installed)	4	
NN	M8 Spring Washer (Pre-installed)	4	
OO	Carabiner	1	
PP	Chain	1	
QQ	M8 x 70 mm Bolt with washer	1	
RR	Single Chain Link	1	